

# M-1093F

## Dual 9" FHD Rack LCD Monitor

**SWIT®**



### ■ Introductions

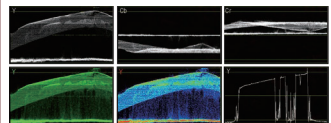
- ◆ 9-inch IPS LCD Panel × 2
- ◆ 1920 × 1200 resolution, 800:1 contrast
- ◆ 19-inch 4U rack mounting, ± 30° rotatable
- ◆ 2K/3G/HD/SD-SDI, HDMI, CVBS monitoring
- ◆ 16-ch Embedded audio meters with alert
- ◆ Select any 2 audio channels to output
- ◆ Waveform Y/Cb/Cr/R/G/B and single line
- ◆ Vector scope, histogram R/G/B/Y
- ◆ AFD, H/V delay, R/G/B/Mono, False color
- ◆ TSL UMD and text TALLY display
- ◆ Zebra stripes, Peaking focus assist
- ◆ SDI timecode display
- ◆ Marker 4:3, 13:9, 14:9, 15:9, 1.85:1, 2.35:1
- ◆ TALLY light and GPI control
- ◆ USB firmware upgrade

### ■ Features

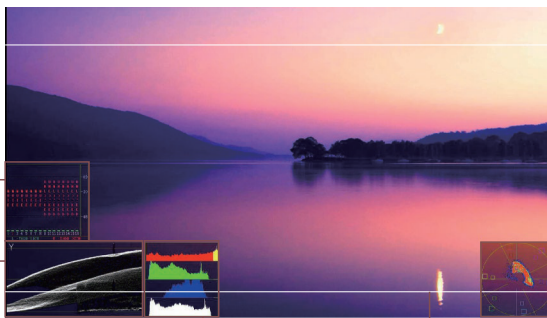
#### Audio Meters

SDI: 16-ch / HDMI: 2-ch  
 Select any 2 channel to output  
 Audio abnormal alert info display  
 Display only 2-ch, 8-ch, or full 16-ch  
 Chart position / Translucent adjust

#### Waveforms



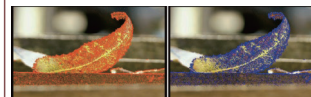
Y/Cb/Cr/R/G/B with single line selection  
 White / Green / False color display  
 Larger size waveform in center  
 Chart position / Translucent adjust



#### Histogram

R/G/B/Y histogram display  
 100%–107% Over-exposure alert

#### Peaking Focus Assist



Red / Blue lines select

#### Vector Scope

White / Color / False color display  
 Larger size vector pattern in center  
 Chart position / Translucent adjust

#### Scale Markers

4:3, 13:9, 14:9, 15:9, 1.85:1, 2.35:1 markers  
 Mask background translucent adjust

### ■ Specification

#### LCD Performance

Size	9 inches × 2
Display area	191.5 × 119.7 mm
Resolution	1920 × 1200
Color	8 bit, 16.77M Color
Aspect ratio	16:9 (4:3 adjustable)
Brightness	450 cd/m <sup>2</sup>
Contrast	1000:1
Viewing Angle	H/V:170° / 170°

#### Input/output (Each LCD)

Input	BNC × 2	2K/3G/HD/SD-SDI input × 2
	BNC × 1	CVBS input
	HDMI-A × 1	HDMI 1.3 input
	GPI × 1	UMD, GPI × 1
Output	3.5mm × 1	analog audio input
	BNC × 2	2K/3G/HD/SD-SDI loop output × 2
	BNC × 1	CVBS loop output
	HDMI-A × 1	HDMI 1.3 loop output
	3.5mm × 1	SDI/HDMI/analog audio output

#### Video Format

SDI	SMPTE-2048-2	2048 × 1080p ( 23.98 / 24 / 25 / 29.97 / 30 / 50 / 59.94 / 60 ) 2048 × 1080i ( 50 / 59.94 / 60 )
	SMPTE-425M-A/B	1080p ( 60 / 59.94 / 50 ) 1080i ( 60 / 59.94 / 50 )
	SMPTE-274M	1080p ( 30 / 29.97 / 25 / 24 / 23.98 )
	SMPTE-RP211	1080psf ( 30 / 29.97 / 25 / 24 / 23.98 )
	SMPTE-296M	720p ( 60 / 59.94 / 50 )
	SMPTE-125M	480i ( 59.94 )
	ITU-R BT.656	576i ( 50 )
HDMI		480i / 576i / 480p / 576p 1080i ( 60 / 59.94 / 50 ) 720p ( 60 / 59.94 / 50 ) 1080p ( 60 / 59.94 / 50 / 30 / 29.97 / 25 / 24 / 23.98 ) 1080psf ( 30 / 29.97 / 25 / 24 / 23.98 )
	CVBS	NTSC / PAL

#### General

Input voltage	DC 6.5V-24V
Power consumption	36W
Working temperature	0°C ~ +40°C
Working humidity	10% ~ 90%
Storage temperature	- 15°C ~ + 60°C
Storage humidity	10% ~ 90%
Dimensions	484 × 177 × 112.8mm
Net weight (main body)	2.8kg

SWIT Electronics Co., Ltd.

Distributed by:

Website: [www.swit.cc](http://www.swit.cc) Tel: +86 25 85805753  
 Email: [contact@swit.cc](mailto:contact@swit.cc) Fax: +86 25 85805296