

SWIT®



BM-U175

17.3-inch 12GSDI 4K/8K HDR Monitor

Features

■ 17.3-inch UHD LCD

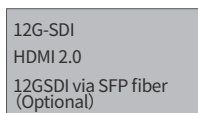
3840x2160 UHD native resolution IPS panel, 300nit LED backlight, 800:1 contrast, H/V 178/178 viewing angle.

■ 18-bit Processing

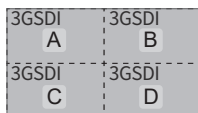
Internal 18-bit signal processing.

■ 4K & 8K UHD Interfaces

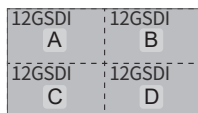
12GSDI 4-in 4-out, supports Single link 4K, Quad link 4K and Quad link 8K inputs; HDMI 2.0 input, and 12GSDI via fiber input by optional SFP adaptor.



Single link 4K inputs



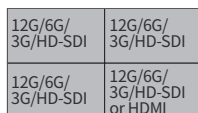
Quad link 4K inputs (2SI&SQD)



Quad link 8K inputs (2SI&SQD)
9 zones pixel-to-pixel zoom-in

■ Mixed inputs Multiviewer

4x independent 12G/6G/3G/HD-SDI or HDMI 1.3/1.4/2.0 mixed inputs multiview; Display waveform, vector, audio meters, EOTF, color gamut for each input.



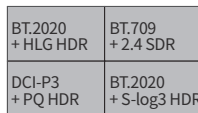
Mixed Multiviewing

■ HDR/Color Gamut selection, Payload ID auto setting

Gamma 1.0/1.8/2.2/2.4/2.6 or HLG/PQ/Slog3 HDR selection; BT.709, DCI-P3, BT.2020 selection; Payload ID auto set input range, color space, HDR/SDR, color gamut, color depth, etc.

■ Multi Color Gamut & EOTF Viewing

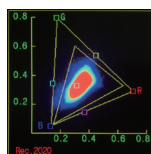
1 input source copied to 4 windows and display different HDR/SDR and color gamut simultaneously.



HDR/SDR simultaneously view

■ Color Gamut Pattern

Display BT.709 and BT.2020 color gamut position pattern.



Color Gamut Pattern



Eye Pattern

■ Eye Pattern

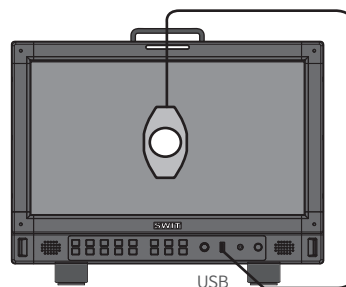
Built-in eye pattern to check input video transmission quality.

■ Zero Latency Processing

Less than 1/100 frame audio/video latency for 4K input sources, for special image processing mode for lip-sync monitoring.

■ 3DLUT Auto Self-Calibration

Built-in calibration software, supports X-rite i1 and JETI Specbos 1211 probes directly plug into monitor USB port to auto calibrate. Calibration time: X-rite i1: 15min; Specbos1211: 45min
Calibration result: $\Delta E < 1.0$



USB



Specbos 1211

X-rite i1
(Dedicated version)

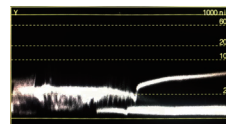
Built-in 3DLUT calibration software, Directly connect color sensor probe to monitor USB port, and the monitor will calibrate itself automatically.

■ Delog 3DLUTs & User 3DLUTs Upload

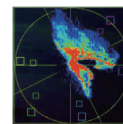
With built-in De-log LUTs including Log-C, S-log2, S-log3, C-log, V-log and RedLogFilm LUTs, to convert Log video to 709 SDR or HLG/PQ HDR. Support User 3DLUTs upload by USB.

■ Waveform/Vector/Histogram

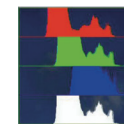
Support waveform (Y, Cb, Cr, R, G, B) and single line mode; support vector scope and R/G/B/Y histogram display, with multiple display position, size and color selection.



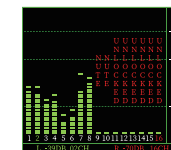
Y, Cb, Cr, R, G, B Waveform with nits



Vector scope



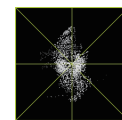
R/G/B/Y histogram



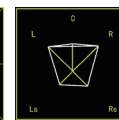
16-ch audio meters

■ Audio Patterns

Display up to 16-ch audio level meters, and select any 2 channels to output via 3.5mm socket or speakers; Support Lissajous and 5.1+2 surround patterns.



Lissajous



surround sound pattern

■ Others

Focus assist, R/G/B/mono, False color, Zebra, H/V delay, Freeze; 15:9, 14:9, 13:9, 4:3, 2.35:1, 2:1, 1.85:1 and User defined markers; Support TSL 3.1/4.0 UMD and text TALLY display; GPI control and webserver IP control, USB firmware updates; Standard 19-inch rack mountable, 7U height.



- ◆ 4x12GSDI, 8K Input Ready
- ◆ HLG/PQ/S-log3 HDR
- ◆ Multi CG/EOTF viewing
- ◆ 3DLUT Self-calibration, dE<1.0

Video Formats

SDI 1/2/3/4 IN/OUT, SFP (Optional)

4096×2160p (60 / 59.94 / 50 / 30 / 29.97 / 25 / 24 / 23.98)
 3840×2160p (60 / 59.94 / 50 / 30 / 29.97 / 25 / 24 / 23.98)
 2048×1080p (60 / 59.94 / 50 / 30 / 29.97 / 25 / 24 / 23.98)
 2048×1080i (50 / 59.94 / 60)
 1080p (60 / 59.94 / 50 / 30 / 29.97 / 25 / 24 / 23.98)
 1080i (60 / 59.94 / 50)
 1080psf (30 / 29.97 / 25 / 24 / 23.98)
 720p (60 / 59.94 / 50)
 480i (59.94) 576i (50)

4K Quad-link SDI IN/OUT (each channel)

2048×1080p (60 / 59.94 / 50 / 30 / 29.97 / 25 / 24 / 23.98)
 1080p (60 / 59.94 / 50 / 30 / 29.97 / 25 / 24 / 23.98)

8K Quad-link SDI IN/OUT (each channel)

4096×2160p (60 / 59.94 / 50 / 30 / 29.97 / 25 / 24 / 23.98)
 3840×2160p (60 / 59.94 / 50 / 30 / 29.97 / 25 / 24 / 23.98)

HDMI IN

4096×2160p (60 / 59.94 / 50 / 30 / 29.97 / 25 / 24 / 23.98)
 3840×2160p (60 / 59.94 / 50 / 30 / 29.97 / 25 / 24 / 23.98)
 1080p (60 / 59.94 / 50 / 30 / 29.97 / 25 / 24 / 23.98)
 1080i (60 / 59.94 / 50)
 720p (60 / 59.94 / 50)

Specifications

Model		BM-U175
Display	LCD size	17.3 inches
	Resolution	3840×2160
	Aspect Ratio	16:9
	Color Depth	8bit 16.77M colors
	Signal Process	18bit
	Color Gamut	100% Rec709; 91.5% DCI-P3
	Viewing angle	H/V 178/178
	Backlight	LED
	Brightness	300nits
	Contrast	800:1
Input	SDI	12G/6G/3G/HD-SDI ×4
	HDMI	HDMI 2.0 ×1
	UMD	RS485 ×1
	GPI (Tally)	RS485 ×1
	Ethernet	RJ45 ×1, 1000M
	USB	USB-A ×1 - 3DLUT & Firmware
Output	SDI	12G/6G/3G/HD-SDI ×4
	Analog audio	3.5mm headphone + Speaker
	UMD	RS485 ×1
General	AC Input	AC 100-240V 50/60Hz
	DC Input	DC 12-17V & V-mount plate
	Power	≤60W
	Working environment	0°C - +40°C; 10% - 90%
	Storage environment	- 15°C - + 60°C; 10% - 90%
	Dimensions	436.02×310.84×88.80mm
	Weight	5.9kg

